

# Food Energy Matching Game

## Teacher notes



**BEAVER  
TRUST**

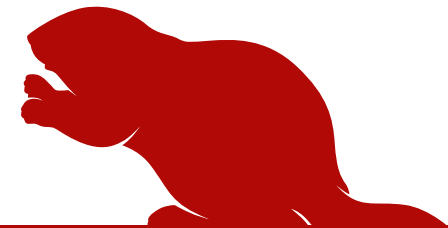
### Learning Objective

I will know and understand the diets of key species which live in beaver created habitats, and how species are linked together via a food web.

**Print and cut out the images keeping the back of the cards blank**

## Instructions

- 1** Place the cards face down on the table
- 2** Turn the cards upright in pairs, if the species is matched to its food and these cards can remain upright
- 3** If the pair do not go together, turn them back over and have another go!

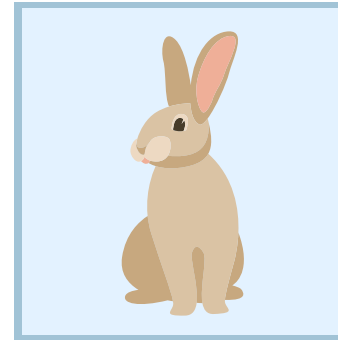




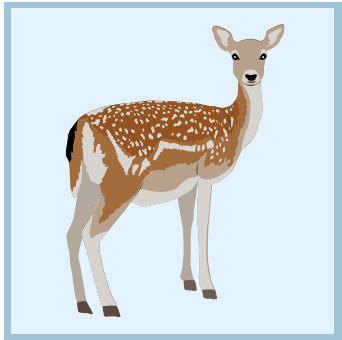
Tree bark  
and  
vegetation



Fish



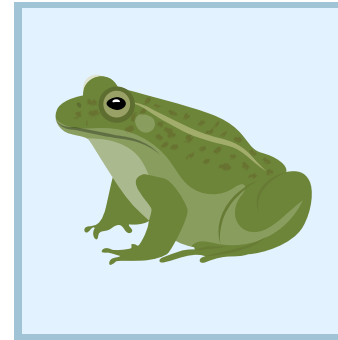
Grass and  
plants



Grass and  
plants



Worms



Flies and  
insects



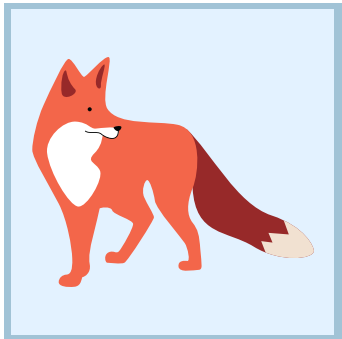
Nuts



Flying  
insects



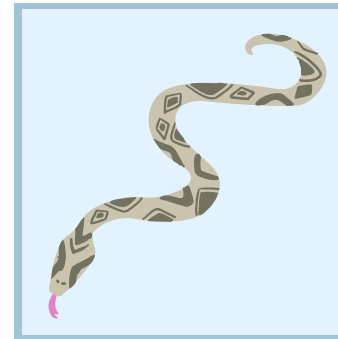
Seeds  
and nuts



Small  
mammals



Sunlight



Mice  
and  
voles